



US



EU



Product description

The Floor Support II for BalanceBox 400 is a floor-to-wall support, designed to safely mount the BalanceBox 400 to non-load-bearing-walls. The contemporary floor support, with its stylish aluminum profiles, offers a perfect mix of safety and elegance.

Article number	Product Description	Load capacity	
481A14001	Floor Support II for BalanceBox® 650	292,5 kg	644.8 lb

Material:

- Aluminium profiles
- Steel wall and interface brackets

Finish:

- Aluminium profiles: Powder coated aluminium color textured
- Aluminium wall bracket covers: Powder coated white RAL9003 textured
- Steel wall brackets: Powder coated white RAL9003 textured
- Steel Interface brackets: Powder coated white RAL9003 textured

Certificates

- CE
- TÜV Baumuster geprüft (62368-1)
- UL/IEC/CSA (62368-1)



Compatible with

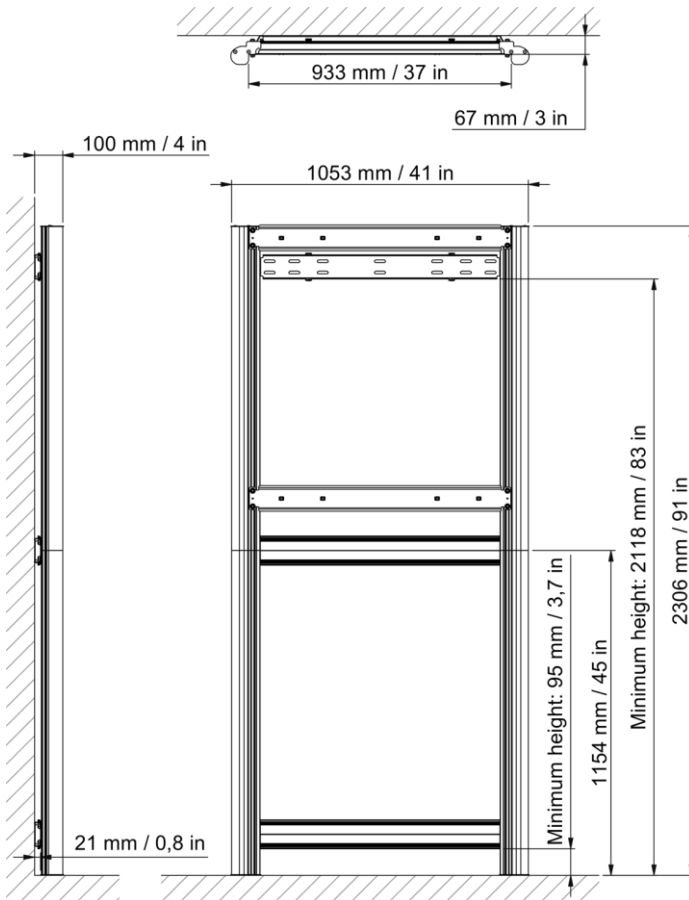
Article number	Product description	Weight range	
484A17	BalanceBox® 650 Light	34 – 68 kg	74 – 149.5 lb
484A18	BalanceBox® 650 Medium	67 – 127 kg	148 – 279 lb
484A19	BalanceBox® 650 Heavy	94 – 162 kg	207 – 356 lb
484A20	BalanceBox® 650 X-Heavy (CE and TÜV only)	174 – 220 kg	383.6 – 485 lb



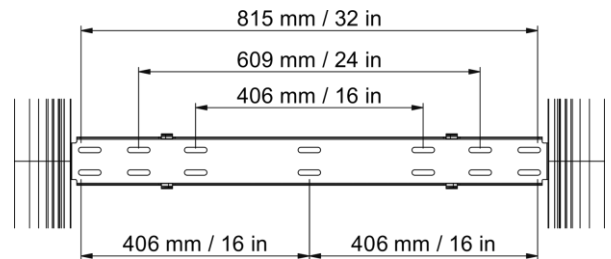
US



EU



Dimensions Wall Bracket:
16", 24" and 32" (3-stud) mounting holes provided



Download technical drawings here



EU



US

Dimensions

Shipping dimensions		
Height	135 mm	5.3 inch
Width	375 mm	14.8 inch
Depth	1180 mm	46.5 inch
Shipping weight	± 25,7 kg	± 56.7 lb
Product weight	± 23,8 kg	± 52.5 lb